

GEEK Stretchable L



GK75-R06QS

GK75-R06QT

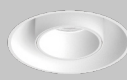
min. 1.5mm

max. 24mm

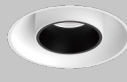
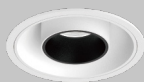
With Trim

Trimless

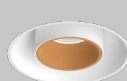
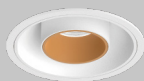
White



Black

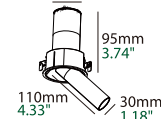


Golden



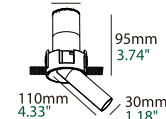
GK75-R06QS

50° / 360°
81mm 3.19"
50mm 1.97"



GK75-R06QT

50° / 360°
74mm 2.91"
50mm 1.97"



Basic Information

Model	GK75-R06QS/R06QT
Embedded Parts	With Trim/Trimless
Mounting	Recessed
Trim Finishing Color	White/Black
Reflector Color	White/Black/Golden
Material	Pure Alu. (Heat Sink)/Die-casting Alu.
Cutout Size	75mm
Light Direction	50° / 360°
IP Rating	IP20
Power	Max. 8W
Input Voltage	DC36V
Input Current	Max. 200mA

Optical Parameters

Light Source	LED COB
Lumens	65lm/W 90lm/W
CRI	97Ra / 90Ra
CCT	3000K ● 3500K ● 4000K ○
CCT Changeable	2700K — 6000K 1800K — 3000K
Beam Angle	15° / 25°
Shielding Angle	62°
UGR	< 9
LED Lifespan	50000hrs

Driver Voltage	AC100-120V AC220-240V
Driver Options	ON/OFF DIM TRIAC/ PHASE-CUT DIM 0/1-10V DIM DALI